

Jeffrey D. Houston

From: Sharon Walsh [sharon@alacartemanagement.com]
Sent: Monday, November 05, 2012 3:08 PM
Cc: Susan Long; William Shaw
Subject: FW: Speed Letter
Importance: High
Attachments: Speed Study.pdf

From: Russell Squelch
Sent: Monday, November 05, 2012 11:41 AM
Subject: Speed Letter

[See letter below and attachment.](#)

Hello Neighbors,

This is the first follow-up letter to everyone about speeding in our neighborhood. After talking to a lot of you and receiving your signed pledges to follow the speed limit, I can see that many of our neighbors are doing a great job.

However, we still have speeders that choose to jeopardize the safety of our community. The situation is that the people that live closest to the gate want speed humps because the people at the top of the neighborhood speed by their homes. Ironically the people at the top will suffer most if speed humps are eventually installed. As you may have noticed, we installed pneumatic road tube sensors to get an idea of the exact speeds that people are going on Silver Wolf Road. The attached month-long report shows that about one in three people is exceeding 30 mph. I think a safe speed that should be observed is 29 mph or less, which allows 4 mph over our State of Nevada law-designated speed limit of 25 mph. We are in the process of installing more speed limit signs to remind traffic in both directions of the posted speed limit.

We have formed a speed committee of volunteers that is going to help in getting the message out.

Installing costly speed humps, purchasing expensive electronic traffic signs, or fining speeders are way more trouble than just having us all see the light. This may mean that we also have to ask our visitors to observe the speed limit. I have asked people that do work for me and they have said "no problem." I have also talked to many landscapers and commercial vehicle drivers and will continue to do so.

In an effort to get everybody involved, the committee is going to monitor speeds from various locations using a radar traffic gun. When a vehicle is going 30 mph or greater, a member of the committee will request it to stop and kindly ask the driver to follow the speed limit in the future. This is a neighborhood committee of volunteers giving up their time, so please be nice to them as they are only trying to help.

If this does not work, we will probably end up with a solution where the majority of neighbors will suffer from the actions of a few.

Trust me on this one: speed humps or other speed abatement devices would not be fun--there goes that nice ride and a lot of cost for new shocks and steering adjustments. If you don't believe me, just look at the sites on the internet to fix cars that constantly go over speed bumps. Speed humps were installed by Washoe County on Broili Drive, a street on the other side of Zolezzi Lane, right after a child was

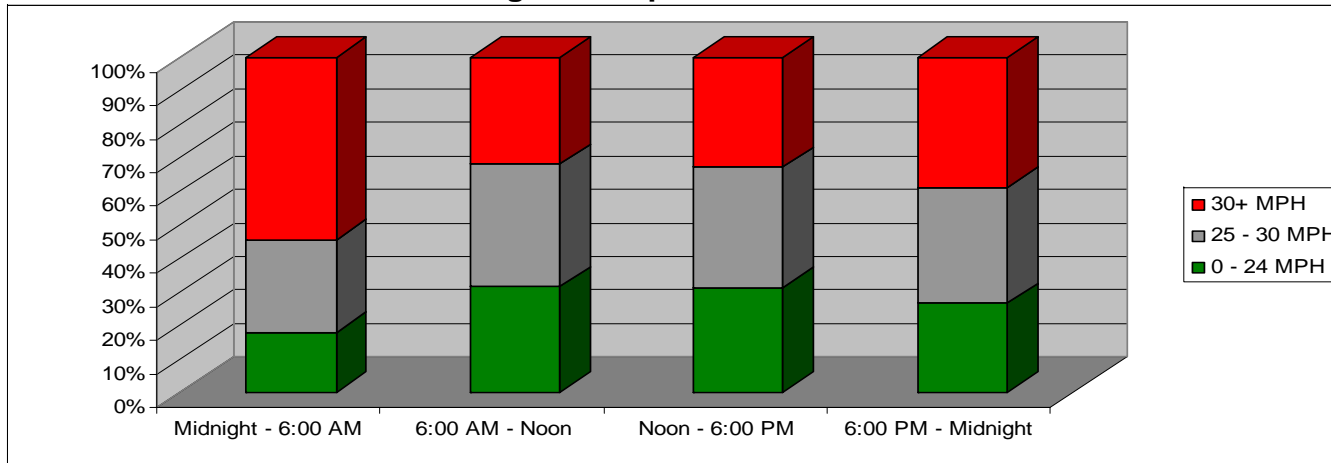
critically injured from being struck by a car. The traffic study there revealed cars going up to 72 mph. We had cars going over 60 mph in our own speeding study. Please choose to see the light with our plea-
-you will be glad you did!

We live in a very small neighborhood; you would think a solution is possible. Please try!

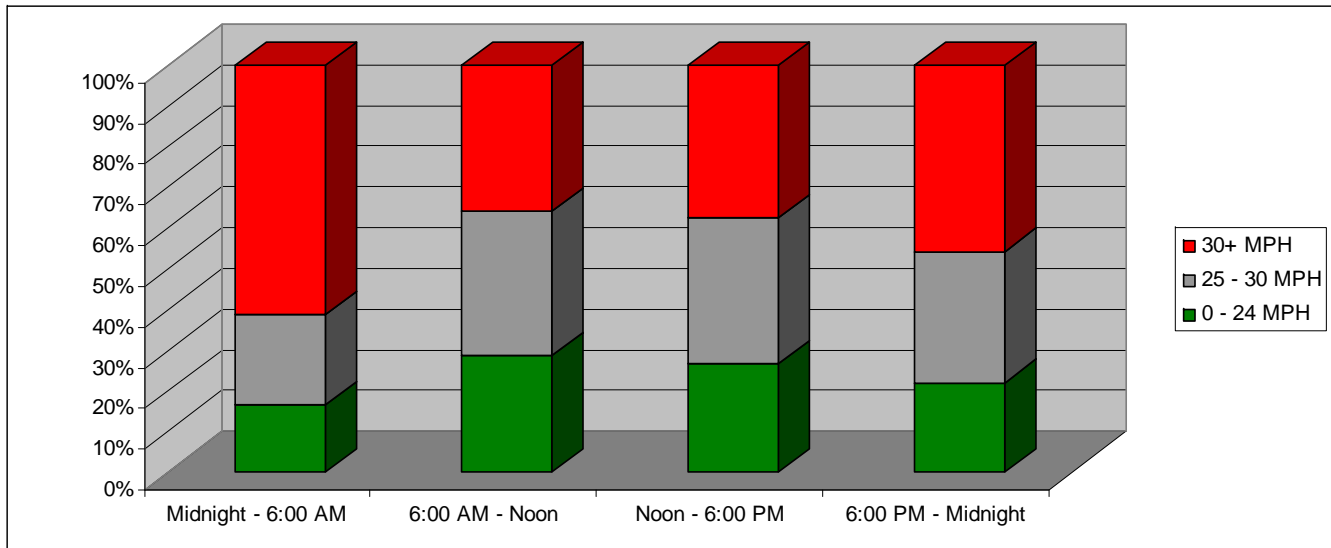
Thank you in advance for your effort,

Russ Squelch, your neighbor
Chairman, Speed Reduction Committee

**Southbound Speeds
Silver Wolf Road
August – September 2012**



**Northbound Speeds
Silver Wolf Road
August – September 2012**



09/24/2012 09:00 - 09:59	1	0	1	5	2	0	0	0	0	0	0	0	0	0	0	9
09/24/2012 10:00 - 10:59	0	2	2	4	3	1	0	0	0	0	0	0	0	0	0	12
09/24/2012 11:00 - 11:59	0	0	3	9	6	1	0	0	0	0	0	0	0	0	0	19
09/24/2012 12:00 - 12:59	0	0	1	3	3	1	0	0	0	0	0	0	0	0	0	8
09/24/2012 13:00 - 13:59	0	0	1	3	4	2	0	0	0	0	0	0	0	0	0	10
09/24/2012 14:00 - 14:59	0	1	4	3	2	0	0	0	0	0	0	0	0	0	0	10
09/24/2012 15:00 - 15:59	0	0	0	2	5	2	1	0	0	0	0	0	0	0	0	10
09/24/2012 16:00 - 16:59	1	2	2	7	4	1	0	0	0	0	0	0	0	0	0	17
09/24/2012 17:00 - 17:59	0	0	5	8	6	1	0	0	0	0	0	0	0	0	0	20
09/24/2012 18:00 - 18:59	1	0	4	7	3	3	0	0	0	0	0	0	0	0	0	18
09/24/2012 19:00 - 19:59	1	0	0	9	9	3	1	0	0	0	1	0	0	0	0	24
09/24/2012 20:00 - 20:59	0	2	6	11	1	2	2	0	0	0	0	0	0	0	0	24
09/24/2012 21:00 - 21:59	0	0	3	7	4	2	1	0	0	0	0	0	0	0	0	17
09/24/2012 22:00 - 22:59	0	1	3	3	2	2	0	0	0	0	0	0	0	0	0	11
09/24/2012 23:00 - 23:59	0	0	1	1	1	0	1	0	0	0	0	0	0	0	0	4
09/25/2012 00:00 - 00:59	0	0	1	1	2	1	0	0	0	0	0	0	0	0	0	5
09/25/2012 01:00 - 01:59	0	0	0	1	2	0	0	0	0	0	0	0	0	0	0	3
09/25/2012 02:00 - 02:59	0	0	0	0	0	0	0	0	0	0	0	0	0	0	0	0
09/25/2012 03:00 - 03:59	0	0	0	0	0	0	0	0	0	0	0	0	0	0	0	0
09/25/2012 04:00 - 04:59	0	0	0	0	0	0	0	0	0	0	0	0	0	0	0	0
09/25/2012 05:00 - 05:59	0	0	0	0	0	0	0	0	0	0	0	0	0	0	0	0
09/25/2012 06:00 - 06:59	0	0	0	1	0	0	0	0	0	0	0	0	0	0	0	1
09/25/2012 07:00 - 07:59	0	0	0	0	0	0	0	0	0	0	0	0	0	0	0	0
09/25/2012 08:00 - 08:59	0	0	0	1	0	0	0	0	0	0	0	0	0	0	0	1
09/25/2012 09:00 - 09:59	0	0	2	3	1	1	0	0	0	0	0	0	0	0	0	7
09/25/2012 10:00 - 10:59	0	0	3	4	2	1	0	0	0	0	0	0	0	0	0	10
09/25/2012 11:00 - 11:59	0	0	1	11	4	0	0	0	0	0	0	0	0	0	0	16
09/25/2012 12:00 - 12:59	0	0	2	5	1	2	0	0	0	0	0	0	0	0	0	10

TOTAL	68	212	861	1397	973	379	69	14	8	2	2	0	0	0	0	3985
Percent	2%	5%	22%	35%	24%	10%	2%	0%	0%	0%	0%	0%	0%	0%	0%	100%

Range 5-14 MPH 15-19 MPH 20-24 MPH 25-29 MPH 30-34 MPH 35-39 MPH 40-44 MPH 45-49 MPH 50-54 MPH 55-59 MPH 60-64 MPH 65-69 MPH 70-74 MPH 75-79 MPH 80-99 MPH Total

TOTAL 0-24 mph	1141	29%
TOTAL 0-29 mph	2538	64%
TOTAL 0-34 mph	3511	88%
TOTAL 25+ mph	2844	71%
TOTAL 30+ mph	1447	36%
TOTAL 35+ mph	474	12%
TOTAL 40+ mph	95	2%
TOTAL 45+ mph	26	1%
TOTAL 50+ mph	12	0%
TOTAL 55+ mph	4	0%
TOTAL 60+ mph	2	0%

* note disruption in log from 09/04/12 - 09/12/12 due to delay awaiting replacement for pneumatic road tube damaged by street sweeper

09/24/2012 08:00 - 08:59	0	1	2	2	1	0	0	0	0	0	0	0	0	0	0	6
09/24/2012 09:00 - 09:59	0	0	3	9	8	1	0	0	0	0	0	0	0	0	0	21
09/24/2012 10:00 - 10:59	1	1	6	9	6	2	0	0	0	0	0	0	0	0	0	25
09/24/2012 11:00 - 11:59	0	1	4	9	3	0	0	0	0	0	0	0	0	0	0	17
09/24/2012 12:00 - 12:59	0	0	2	9	4	1	0	0	0	0	0	0	0	0	0	16
09/24/2012 13:00 - 13:59	0	1	1	4	6	0	0	0	0	0	0	0	0	0	0	12
09/24/2012 14:00 - 14:59	0	0	3	7	3	0	0	0	0	0	0	0	0	0	0	13
09/24/2012 15:00 - 15:59	0	0	1	5	5	1	0	0	0	0	0	0	0	0	0	12
09/24/2012 16:00 - 16:59	2	0	1	4	4	0	2	0	0	0	0	0	0	0	0	13
09/24/2012 17:00 - 17:59	1	0	2	6	9	1	1	0	0	0	0	0	0	0	0	20
09/24/2012 18:00 - 18:59	0	0	4	6	5	0	2	0	0	0	0	0	0	0	0	17
09/24/2012 19:00 - 19:59	0	0	2	8	5	1	1	0	1	0	0	0	0	0	0	18
09/24/2012 20:00 - 20:59	0	0	5	4	3	0	0	0	0	0	0	0	0	0	0	12
09/24/2012 21:00 - 21:59	0	0	3	2	5	1	0	0	0	0	0	0	0	0	0	11
09/24/2012 22:00 - 22:59	0	0	1	2	2	1	0	0	0	0	0	0	0	0	0	6
09/24/2012 23:00 - 23:59	2	0	0	0	1	0	0	0	0	0	0	0	0	0	0	3
09/25/2012 00:00 - 00:59	0	0	0	0	0	1	0	1	0	0	0	0	0	0	0	2
09/25/2012 01:00 - 01:59	0	0	0	0	0	0	0	0	0	0	0	0	0	0	0	0
09/25/2012 02:00 - 02:59	0	0	0	0	0	0	0	0	0	0	0	0	0	0	0	0
09/25/2012 03:00 - 03:59	0	0	0	0	0	0	0	0	0	0	0	0	0	0	0	0
09/25/2012 04:00 - 04:59	0	0	0	0	0	0	0	0	0	0	0	0	0	0	0	0
09/25/2012 05:00 - 05:59	0	0	0	0	1	0	0	0	0	0	0	0	0	0	0	1
09/25/2012 06:00 - 06:59	0	0	0	1	1	0	0	0	0	0	0	0	0	0	0	2
09/25/2012 07:00 - 07:59	0	0	1	0	0	0	0	0	0	0	0	0	0	0	0	1
09/25/2012 08:00 - 08:59	0	0	3	1	1	0	0	0	0	0	0	0	0	0	0	5
09/25/2012 09:00 - 09:59	0	2	4	12	4	2	0	0	0	0	0	0	0	0	0	24
09/25/2012 10:00 - 10:59	1	0	7	5	7	3	0	0	0	0	0	0	0	0	0	23
09/25/2012 11:00 - 11:59	0	0	3	7	3	0	0	0	0	0	0	0	0	0	0	13
09/25/2012 12:00 - 12:59	0	0	2	5	3	0	0	0	0	0	0	0	0	0	0	10

TOTAL	91	142	787	1361	1130	391	47	9	1	1	0	0	0	0	0	3960
Percent	2%	4%	20%	34%	29%	10%	1%	0%	0%	0%	0%	0%	0%	0%	0%	100%

Range 5-14 MPH 15-19 MPH 20-24 MPH 25-29 MPH 30-34 MPH 35-39 MPH 40-44 MPH 45-49 MPH 50-54 MPH 55-59 MPH 60-64 MPH 65-69 MPH 70-74 MPH 75-79 MPH 80-99 MPH Total

TOTAL 0-24 mph	1020	26%
TOTAL 0-29 mph	2381	60%
TOTAL 0-34 mph	3511	89%
TOTAL 25+ mph	2940	74%
TOTAL 30+ mph	1579	40%
TOTAL 35+ mph	449	11%
TOTAL 40+ mph	58	1%
TOTAL 45+ mph	11	0%
TOTAL 50+ mph	2	0%
TOTAL 55+ mph	1	0%

* note disruption in log from 09/04/12 - 09/12/12 due to delay awaiting replacement for pneumatic road tube damaged by street sweeper